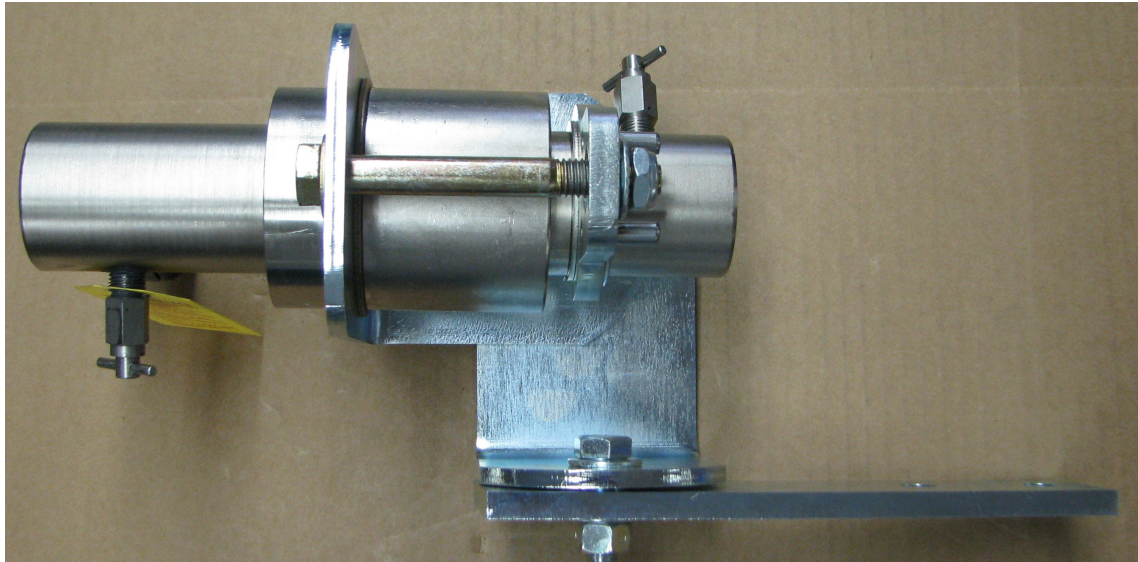


**OPERATING AND INSTALLATION
INSTRUCTIONS FOR THE
A-HFC-114R
HIGH FLOW TOOL BAR COUPLING**



CAUTION  DANGER

PLEASE READ THIS ENTIRE MANUAL AND FOLLOW THE INSTRUCTIONS CAREFULLY. FAILURE TO READ AND FOLLOW ALL OF THE INSTRUCTIONS AND WARNINGS IN THIS MANUAL MIGHT RESULT IN A DANGEROUS RELEASE OF ANYDROUS AMMONIA AND CAUSE SERIOUS BODILY INJURY.

TABLE OF CONTENTS

New installation instruction	page 3-5
Retro fit installation instructions	page 5-7
Reconnection instructions	page 7-9
Disconnection instructions	page 9
Maintenance instructions	page 9-10

CAUTION **DANGER**

ALLWAYS FOLLOW MANUFACTURES INSTRUCTIONS WHEN INSTALLING, DISCONNECTING OR RECONNECTING THE QUICK COUPLING. FAILURE TO DO SO MAY CAUSE BODILY INJURY.

ALWAYS FOLLOW STEPS 1-3 BELOW BEFORE PERFORMING MAINTENANCE, INSTIALLATION, RECONNECTING OR DISCONNECTING THE QUICK COUPLING

- 1. ALLWAYS WEAR GOGGLES AND GLOVES AND HAVE EMERGENCY WATER AVAILABLE.**
- 2. CLOSE ALL VALVES.**
- 3. OPEN ALL BLEED VALVES AND DRAIN ALL OF THE AMMONIA FROM THE HOSES ATTACHED TO THE TANK AND THE APPLICATOR. ALWAYS BE CAREFUL WHEN OPENING A BLEED VALVE TO MAKE SURE THE OUTLET IS POINTING IN A SAFE DIRECTION AND AWAY FROM YOU OR ANYONE ELSE. DO NOT PROCEED UNTIL YOU HAVE MADE SURE ALL OF THE AMMONIA HAS BEEN DRAINED FROM ALL OF THE HOSES.**

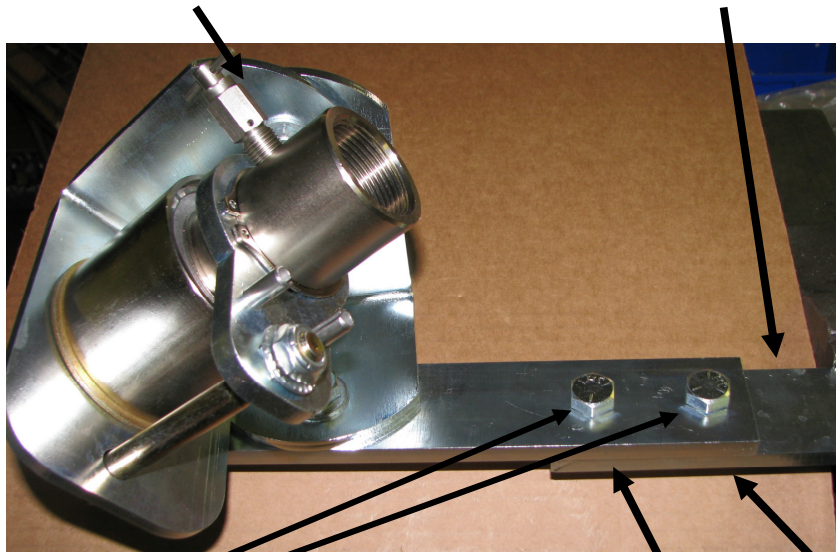
DO NOT REMOVE OR REPOSITION THE BRACKETS. ALL THE BRACKETS IN THE ORIENTATION THEY ARE SUPPLIED IN MUST BE USED FOR THE COUPLER TO FUNCTION PROPERLY. IF ANY BRACKET IS REMOVED OR RE-ORIENTATED THE COUPLER WILL NOT WORK

NEW INSTALLATION INSTRUCTIONS

1. ALWAYS WEAR GOGGLES AND GLOVES AND HAVE EMERGENCY WATER AVAILABLE.
2. CLOSE ALL VALVES.
3. OPEN ALL BLEED VALVES AND DRAIN ALL OF THE AMMONIA FROM THE HOSES ATTACHED TO THE TANK AND THE APPLICATOR. **ALWAYS BE CAREFUL WHEN OPENING A BLEED VALVE TO MAKE SURE THE OUTLET IS POINTING IN A SAFE DIRECTION AND AWAY FROM YOU OR ANYONE ELSE. DO NOT PROCEED UNTIL YOU HAVE MADE SURE ALL OF THE AMMONIA HAS BEEN DRAINED FROM ALL OF THE HOSES.**
4. ATTACH THE MOUNTING CLAMP ON TO THE TOOL BAR BY DRILLING TWO 17/32 INCH HOLES ON 2" CENTERS. MAKE SURE IT IS MOUNTED ONTO A PORTION OF THE TOOL BAR THAT IS ATLEAST 1/4" THICK. ATTACH THE TWO 1/2" BOLTS AND NUTS SECURELY TO THE CLAMP AND TOOL BAR AND TIGHTEN FIRMLY. THE FEMALE SIDE OF THE COUPLING WILL ALREADY BE ATTACHED TO THE MOUNTING BRACKET BUT MAKE SURE THE COUPLING IS INSTALLED ON THE CORRECT SIDE OF THE BRACKET AS SHOWN IN THE PHOTO BELOW.

NOTE BRACKET ORIENTATION

TOOL BAR



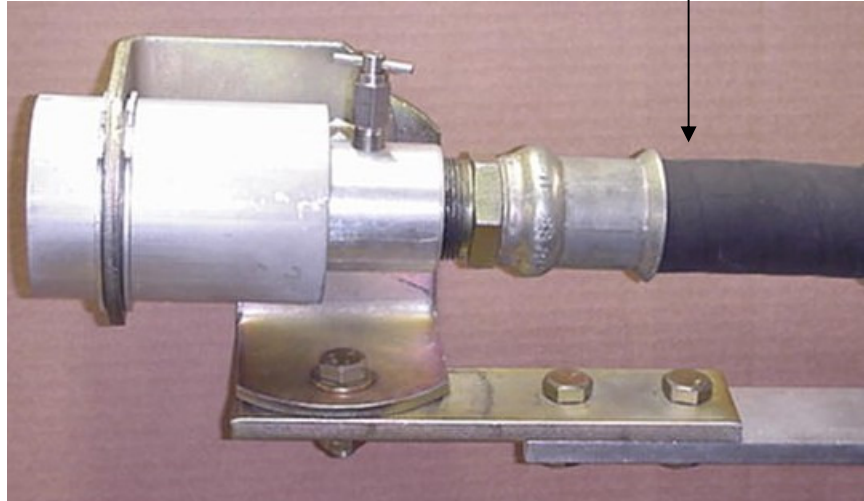
ATTACH THE TWO 1/2" BOLTS AND NUTS

DRILL TWO 17/32 INCH HOLES

MAKE SURE YOU HAVE SUFFICIENT SLACK IN THE SECTION OF HOSE CONNECTING THE A-HFC-114R TO THE APPLICATION EQUIPMENT MOUNTED ON THE TOOL BAR TO ALLOW SUFFICIENT ARTICULATION OF THE UNIT. 12"-18" IS NORMALLY ACCEPTABLE DEPENDING ON THE MOUNTING LOCATION OF THE FLOW CONTROL DEVICE. IF INSTALLING ONTO A SWING ARM 6" OF SLACK AS MEASURED BETWEEN THE INLET OF THE COUPLER AND HINGE POINT ON THE SWING IS ACCEPTABLE

- 5. SCREW THE APPLICATOR HOSE INTO THE FEMALE END OF THE COUPLING AND MAKE SURE TO USE PIPE THREAD SEALANT AS SHOWN IN THE PHOTO BELOW**

HOSE TO METERING DEVICE



- 6. IF YOUR SUPPLY HOSE IS ATTACHED TO THE NURSE TANK, SCREW AN ACME ADAPTOR INTO THE 1-1/4" FNPT OF THE MALE END OF THE COUPLING. MAKE SURE TO USE PIPE THREAD SEALANT AS SHOWN IN THE PHOTO BELOW**



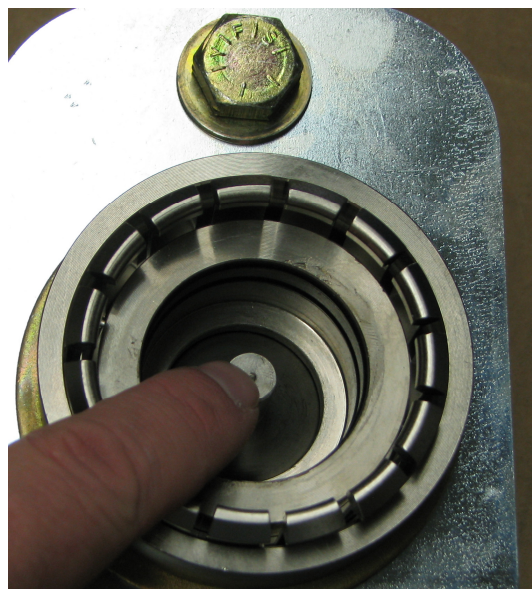
- 7. IF YOUR SUPPLY HOSE IS ATTACHED TO THE TOOL BAR THEN SCREW THE SUPPLY HOSE INTO THE 1-1/4" FNPT SIDE OF THE MALE END OF THE COUPLING. AS SHOWN IN THE PHOTO BELOW.**



8. ATTACH THE OPERATING INSTRUCTION DECAL TO THE TOOL BAR AS CLOSE TO THE A-HFC-114R AS POSSIBLE
9. FOR CONNECTING THE MALE AND FEMALE ENDS OF THE COUPLING TOGETHER SEE THE “RECONNECTION INSTRUCTIONS” SECTION BELOW.
1. *****IMPORTANT*** MAKE SURE THE BRACKET SWIVELS UP AND DOWN 20 DEGREES AND SIDE TO SIDE 80 DEGREES TO EACH SIDE OF CENTER LINE. THERE SHALL BE NOTHING OBSTRUCTING THE SWIVEL FEATURE OF THIS UNIT. DO NOT INSTALL ANY APPARATUS; HOSE SUPPORT ANYTHING ELSE THAT WILL IMPEDE THE MOVEMENT OF THE BREAKAWAY. THIS IS VERY IMPORTANT, IF IT DOES NOT SWIVEL UP AND DOWN AND SIDE TO SIDE THEN IT WILL NOT FUNCTION PROPERLY.**
2. AFTER YOU HAVE INSTALLED YOUR NEW COUPLING SEE THE “RECCONECTION INSTRUCTIONS” SECTION ABOVE TO CONNECT THE MALE END.

RECONNECTION INSTRUCTIONS

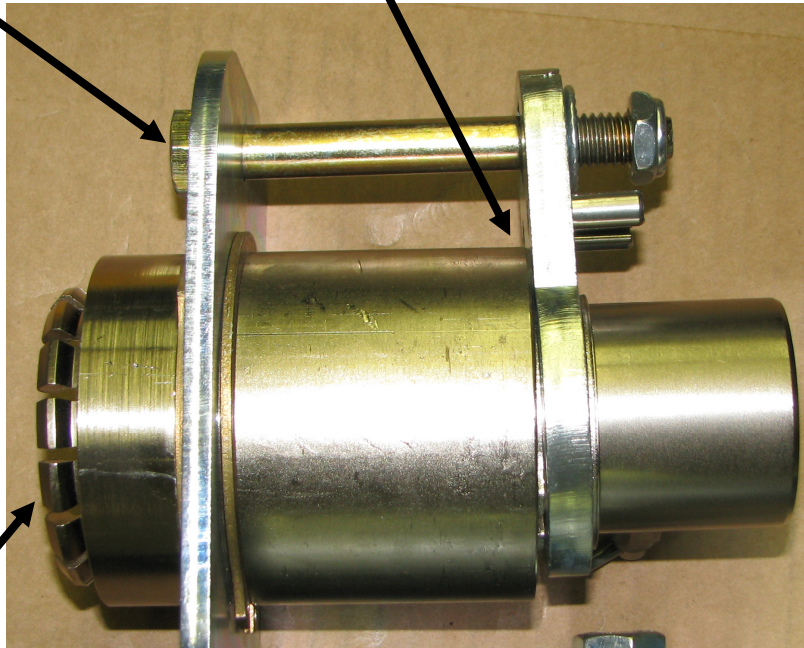
1. ALWAYS WEAR GOGGLES AND GLOVES AND HAVE EMERGENCY WATER AVAILABLE.
2. CLOSE ALL VALVES.
3. OPEN ALL BLEED VALVES AND DRAIN ALL OF THE AMMONIA FROM THE HOSES ATTACHED TO THE TANK AND THE APPLICATOR. **ALWAYS BE CAREFUL WHEN OPENING A BLEED VALVE TO MAKE SURE THE OUTLET IS POINTING IN A SAFE DIRECTION AND AWAY FROM YOU OR ANYONE ELSE. DO NOT PROCEED UNTIL YOU HAVE MADE SURE ALL OF THE AMMONIA HAS BEEN DRAINED FROM ALL OF THE HOSES.**
4. INSPECT THE ORINGS TO MAKE SURE THEY ARE IN GOOD CONDITION. **NEVER LOOK DIRECTLY INTO THE OPENING OF THE MALE OR FEMALE SIDE OF THE QUICK COUPLING. HOLD IT AT AN ANGLE AWAY FROM YOU TO DO THE INSPECTION SO IF ANY AMMONIA IS LEFT IN THE HOSE IT WILL NOT SPRAY ON YOU OR ANYONE ELSE.** GREASE O-RINGS IF NECESSARY. SEE PHOTO BELOW



5. USE A 3/4" WRENCH AND TURN THE RECONNECTION BOLT CLOCKWISE UNTIL THE HFC-B4 BRACKET TOUCHS THE HFC-6 HOUSING. THIS WILL EXPOSE THE LOCKING COLLET.

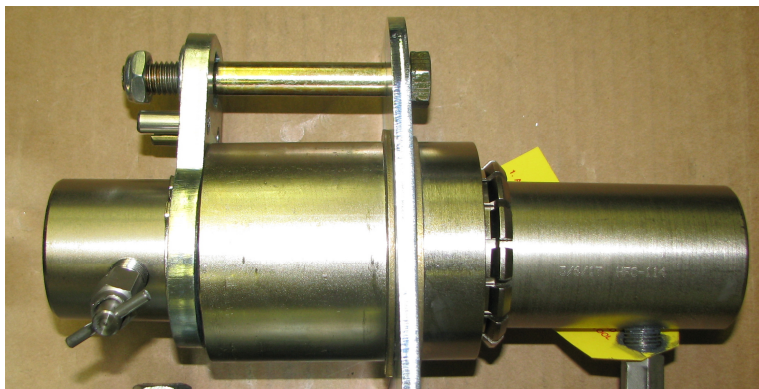
3/4" WRENCH HERE

HFC-4R BRACKET TOUCHING HOUSING

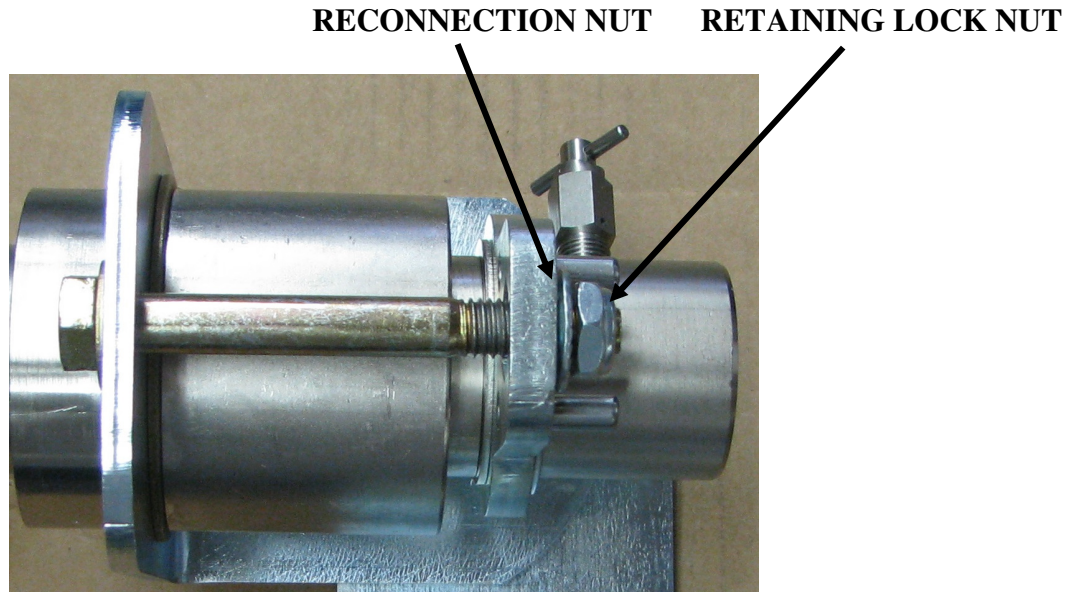


EXPOSED LOCKING COLLET

6. SLOWLY INSERT THE MALE END OF THE QUICK COUPLER THAT IS ATTACHED TO THE NURSE TANK HOSE INTO THE FEMALE END OF THE QUICK COUPLER THAT IS ATTACHED TO THE APPLICATOR. IT HELPS SOMETIMES TO TWIST THE MALE END WHEN INSERTING IT TO GET THE MALE TIP PAST THE ORINGS. THEN HOLD THE **BRACKET** ON THE FEMALE END FIRMLY WITH ONE HAND AND PUSH THE MALE END IN FIRMLY UNTIL IT SNAPS INTO PLACE. VISUALLY CONFIRM THE LOCKING LIP IS PASS THE TEETH OF THE LOCKING COLLET. SEE PICTURE BELOW

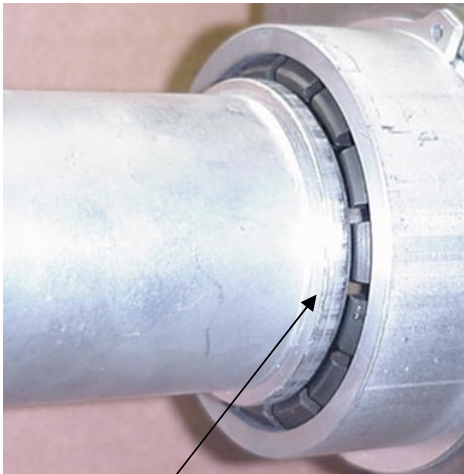


7. USE A 3/4" WRENCH AND TURN THE RECONNECTION BOLT COUNTER CLOCK WISE UNTIL THE RECONNECTION NUT HITS THE RETAINING LOCK NUT AND THE LOCKING LIP IS RECESSED INTO THE HOUSING.



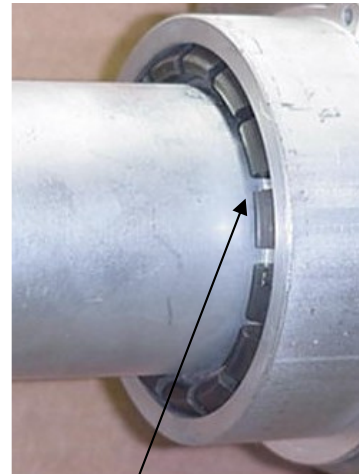
SEE PHOTOS BELOW TO VERIFY THE COUPLER IN READY FOR USE.

NOT INSTALLED CORRECTLY



LOCKING SHOULDER NOT INSERTED

INSTALLED CORRECTLY



LOCKING SHOULDER INSERTED

LOCKING SHOULDER



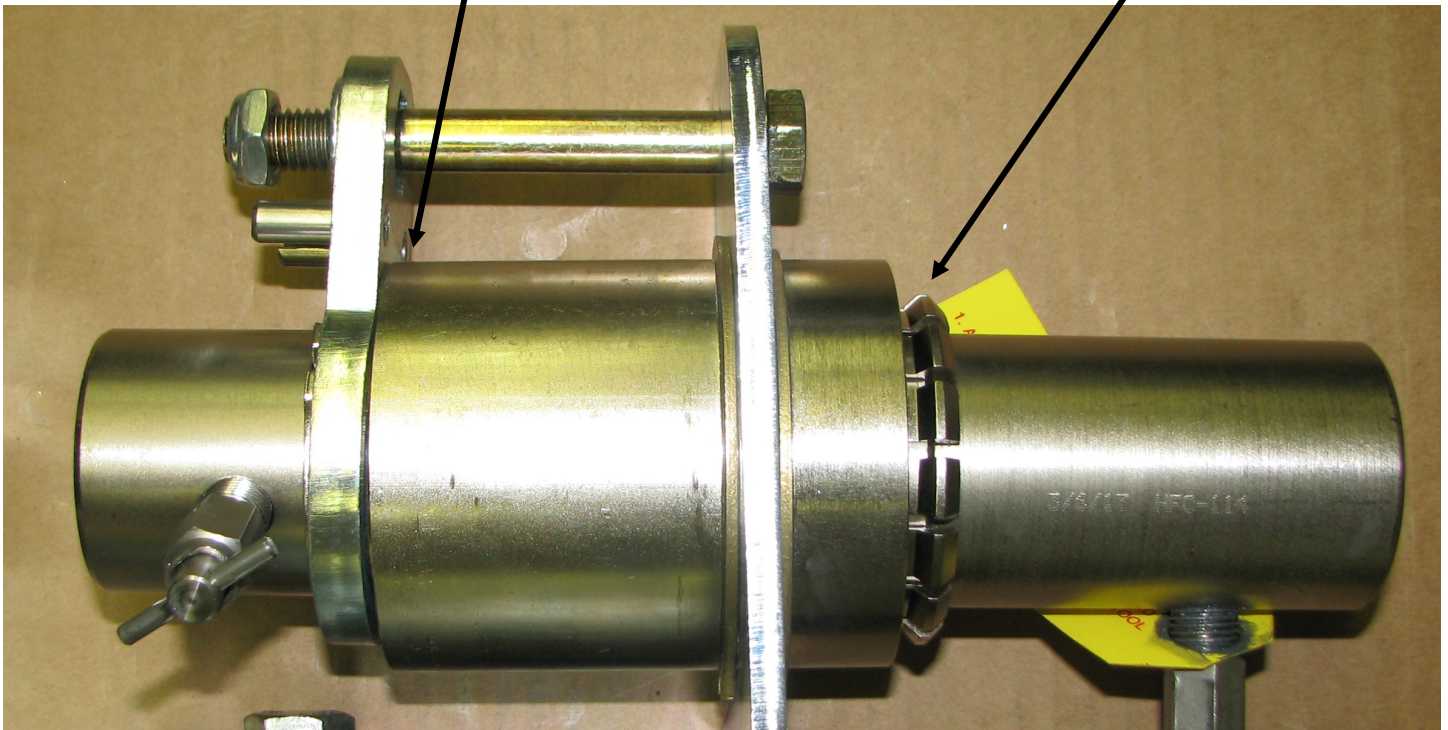
8. SHAKE HOSE TO MAKE SURE IT IS SECURELY ATTACHED.
9. CLOSE ALL BLEED VALVES

DISCONNECTION INSTRUCTIONS

1. ALWAYS WEAR GOGGLES AND GLOVES AND HAVE EMERGENCY WATER AVAILABLE.
2. CLOSE ALL VALVES.
3. OPEN ALL BLEED VALVES AND DRAIN ALL OF THE AMMONIA FROM THE HOSES ATTACHED TO THE TANK AND THE APPLICATOR. **ALWAYS BE CAREFUL WHEN OPENING A BLEED VALVE TO MAKE SURE THE OUTLET IS POINTING IN A SAFE DIRECTION AND AWAY FROM YOU OR ANYONE ELSE. DO NOT PROCEED UNTIL YOU HAVE MADE SURE ALL OF THE AMMONIA HAS BEEN DRAINED FROM ALL OF THE HOSES.**
4. USE A 3/4" WRENCH AND TURN THE RECONNECTION BOLT CLOCKWISE UNTIL THE HFC-B4R BRACKET TOUCHS THE BACK OF THE HFC-6 HOUSING. THIS WILL EXPOSE THE LOCKING COLLET.

HFC-B4R BRACKET TOUCHING HFC-6 HOUSING

EXPOSED LOCKING COLLET



5. PULL THE MALE END OUT FIRMLY.

MAINTENANCE INSTRUCTIONS

1. ALWAYS WEAR GOGGLES AND GLOVES AND HAVE EMERGENCY WATER AVAILABLE.
2. CLOSE ALL VALVES.
3. OPEN ALL BLEED VALVES AND DRAIN ALL OF THE AMMONIA FROM THE HOSES ATTACHED TO THE TANK AND THE APPLICATOR. **ALWAYS BE CAREFUL WHEN OPENING A BLEED VALVE TO MAKE SURE THE OUTLET IS POINTING IN A SAFE DIRECTION AND AWAY FROM YOU OR ANYONE ELSE. DO NOT PROCEED UNTIL YOU HAVE MADE SURE ALL OF THE AMMONIA HAS BEEN DRAINED FROM ALL OF THE HOSES.**
4. REMOVE MALE END BY FOLLOWING THE DISCONNECTION INSTRUCTION ABOVE.
5. REMOVE THE HOSES FROM BOTH THE FEMALE END AND MALE END OF THE QUICK COUPLING SO THAT THE QUICK COUPLING IS NOT CONNECTED TO ANY HOSES.
6. INSPECT THE 2 O-RINGS IN THE FEMALE SIDE OF THE COUPLING FOR CUTS OR PITS IN THE O-RING. REPLACE THEM IF THERE ARE ANY CUTS OR PITS OR SEEM TO BE DRYED OUT OR AGING. IF THEY ARE IN GOOD SHAPE APPLY SOME GREASE TO THEM TO ENSURE THEY REMAIN IN GOOD CONDITON. **NEVER LOOK DIRECTLY INTO THE OPENING OF THE MALE OR FEMALE SIDE OF THE QUICK COUPLING. HOLD IT AT AN ANGLE AWAY FROM YOU TO DO THE INSPECTION SO IF ANY AMMONIA IS LEFT IN THE COUPLING IT WILL NOT SPRAY ON YOU OR ANYONE ELSE.**
7. INSPECT THE CHECK VALVES IN THE MALE AND FEMALE ENDS OF THE QUICK COUPLING BY PRESSING IN ON THE CHECK VALVE WITH YOUR THUMB TO MAKE SURE THEY MOVE IN AND OUT FREELY.
8. CLEAN ANY DIRT OR DEBRIS THAT YOU FIND IN EITHER END OF THE COUPLING.
9. RECONNECT THE HOSES THAT WERE REMOVED AND FOLLOW THE “RECCONNECTION INSTRUCTIONS” SECTION ABOVE TO RECCONECT THE QUICK COUPLING.
10. AFTER EACH SEASONAL USE DISCONNECT THE MALE END FROM THE FEMALE END AND CLEAN DIRT AND DEBRIS FROM THE UNIT, GREASE THE O-RINGS AND REINSTALL THE MALE END. THIS WILL PROLONG THE LIFE OF THE UNIT AS WELL AS KEEP IN GOOD WORKING ORDER.

**IF YOU HAVE ANY QUESTIONS PLEASE CALL US AT
800-537-5642**